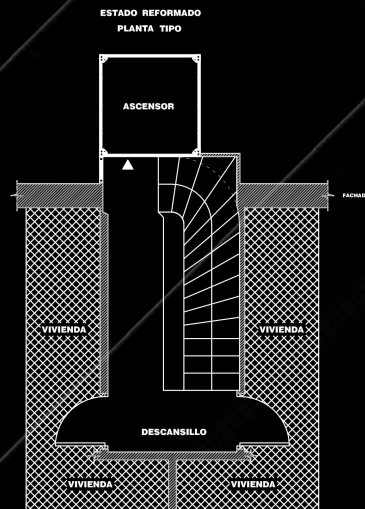
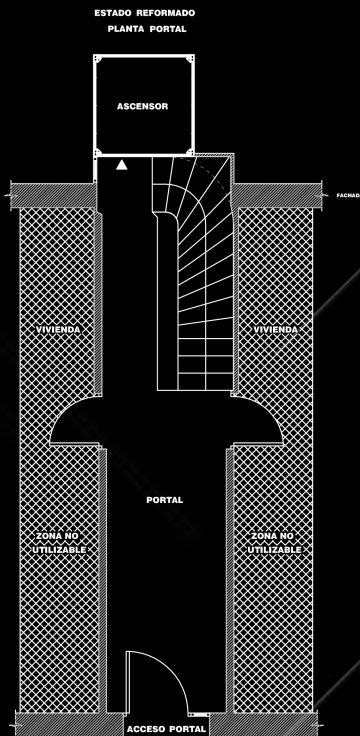
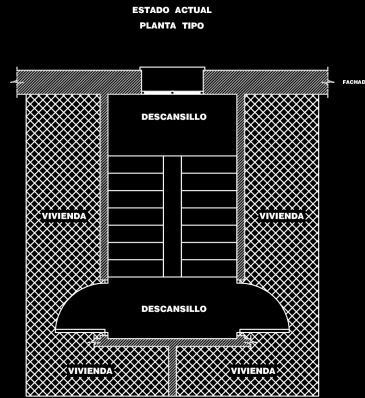
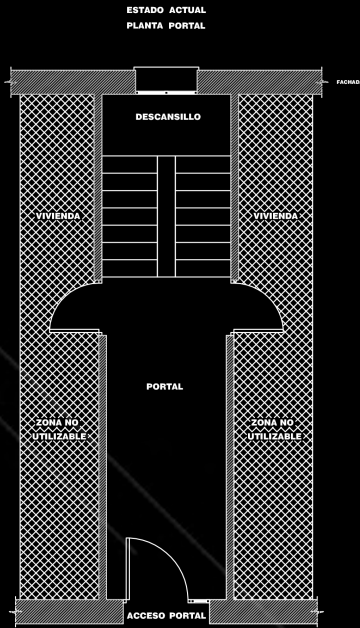




MODEL 2

This solution is adopted when the authorities allows the occupation of public land and the thoroughfare is not wide enough for such occupation without any kind of restriction. By implementing this solution, we carry out the total reconstruction of the stair, creation of new common landings for the stair and the lift, in order to occupy a minimum road space, and installation of a lift on the outside of the building to provide service for the users of the floor.



II

COTAS EN MILIMETROS





